



Leather Guild



Saddlery Leather and Luxury Islay Tweed Doggy Accessories.

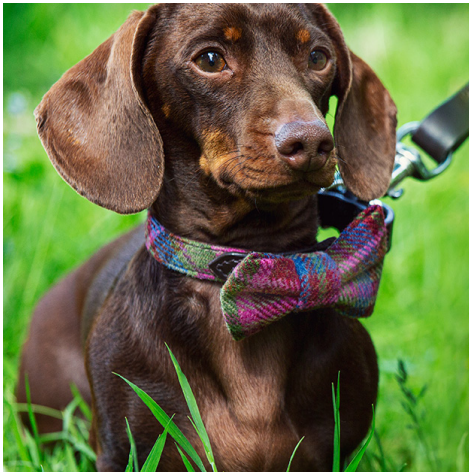
This traditional combination of materials make stunningly stylish dog accessories – the ideal gift for a dog loving owner and their best friend.

Dapper Dog Bow Tie



Our bows have two cotton covered elasticated loops at the back and can be easily put on or taken off the collars.

Dapper Dog Collar

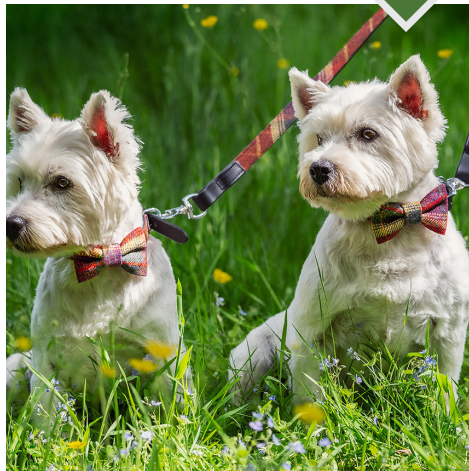
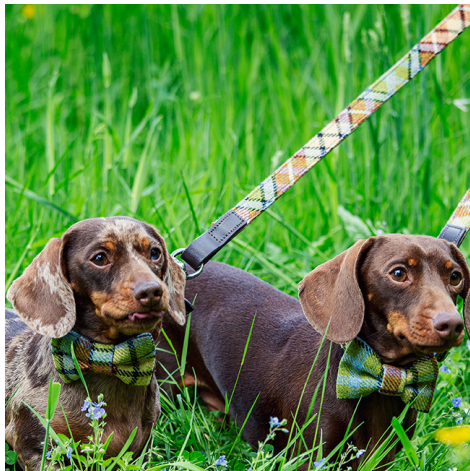


The Islay tweed is lined with leather and the tweed is treated with DuPont Teflon coating for enhanced water and stain repellence with durable stainless-steel fittings.



Collar Sizes – Circumference Range – Width (cm)
Small – 26-35cm – 1.8cm Medium – 35-44cm – 2cm

Dog Lead

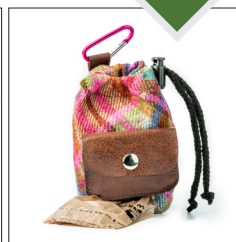
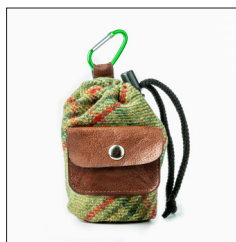


The Islay tweed is lined with leather and the tweed is treated with DuPont Teflon coating for enhanced water and stain repellence with durable stainless-steel fittings.



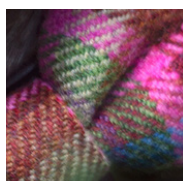
Leads are 95cm long (110cm with the handle included)

Doggie Treat and poo bag dispenser



A stylish Islay tweed and leather bag for carrying your dog treats and poo bags. The large compartment is ideal for carrying doggy treats and other training or walking essentials. The leather stud closure pocket holds a roll of poo bags which are dispensed through an opening in the base. Attaches to your belt loop with a carabiner style clip.

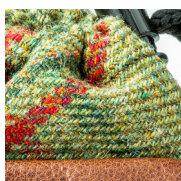
All style available in the following colours



Pink Tweed (7)



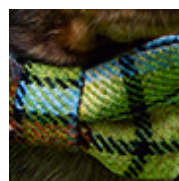
POW Tweed (0)



Green Tweed (8)



Glen Red (6)



Coastal Tweed (14)



Leather Guild

Leather Guild
19 West Clyde St, Helensburgh G84 8SQ
Tel: +44 (0) 1436 677442
E-mail: sales@leatherguild.co.uk
www.leatherguild.co.uk



www.facebook.com/LeatherGuildAccessories



[@Loveleatherguild](https://twitter.com/Loveleatherguild)