

## Verification Report

No. CANEC2214991901

Date: 12 Aug 2022

Page 1 of 10

Client Name : THINKING GIFTS COMPANY LIMITED

Client Address : FIRST FLOOR, 85 GREAT PORTLAND STREET, LONDON, W1W7LT, U.K.

Sample Name : RECHARGEABLE FLEXILIGHT

Tested Basic Model No. 8000

(P.O.No) :

Client Ref. Info. : Used for 8001, It`s just different in appearance

The above sample(s) and information were provided by the client.

SGS Job No. : CP22-038699 - GZ

Date of Sample Received : 12 Jul 2022

Verification Period : 12 Jul 2022 - 04 Aug 2022

Verification Requested : With reference to RoHS Directive (EU) 2015/863 amending 2011/65/EU.

Verification Method(s) : Please refer to next page(s).

Verification Result(s) : Please refer to next page(s).

### Test Result Summary

Test Items	Conclusion
EU RoHS Directive (EU) 2015/863 amending Annex II to Directive 2011/65/EU- Lead, Mercury, Cadmium, Hexavalent chromium, Polybrominated biphenyls (PBBs), Polybrominated diphenyl ethers (PBDEs), Bis(2-ethylhexyl) phthalate (DEHP), Butyl benzyl phthalate (BBP), Dibutyl phthalate (DBP) and Diisobutyl phthalate (DIBP)	PASS

Signed for and on behalf of  
SGS-CSTC Standards Technical Services Co., Ltd. Guangzhou Branch

*Tyler Zhang*

Tyler Zhang  
Approved Signatory

scan to see the report



5E3A343D



SGS-CSTC Standards Technical Services Co., Ltd.  
Guangzhou Branch Testing Center Chemical Laboratory.

Unless otherwise agreed in writing, this document is issued by the Company subject to its General Conditions of Service printed overleaf, available on request or accessible at <http://www.sgs.com/en/Terms-and-Conditions.aspx> and, for electronic format documents, subject to Terms and Conditions for Electronic Documents at <http://www.sgs.com/en/Terms-and-Conditions/Terms-e-Documents.aspx>. Attention is drawn to the limitation of liability, indemnification and jurisdiction issues defined therein. Any holder of this document is advised that information contained hereon reflects the Company's findings at the time of its intervention only and within the limits of Client's instructions, if any. The Company's sole responsibility is to its Client and this document does not exonerate parties to a transaction from exercising all their rights and obligations under the transaction documents. This document cannot be reproduced except in full, without prior written approval of the Company. Any unauthorized alteration, forgery or falsification of the content or appearance of this document is unlawful and offenders may be prosecuted to the fullest extent of the law. Unless otherwise stated the results shown in this test report refer only to the sample(s) tested.

Attention: To check the authenticity of testing / inspection report & certificate, please contact us at telephone: (86-755) 8307 1443, or email: [CN.Doccheck@sgs.com](mailto:CN.Doccheck@sgs.com)

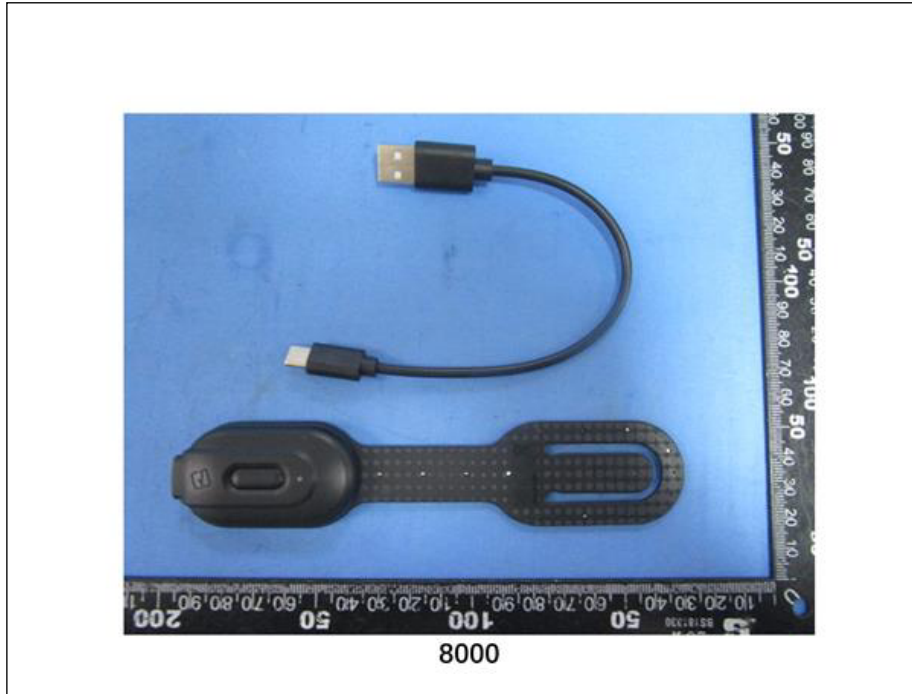
198 Kezhu Road, Sciencetech Park Guangzhou Economic & Technology Development District, Guangzhou, China 510663

中国·广州·经济技术开发区科学城科珠路198号 邮编: 510663

t (86-20) 82155555 [www.sgs.com](http://www.sgs.com)

t (86-20) 82155555 [sgs.china@sgs.com](mailto:sgs.china@sgs.com)

Photo of Submitted Sample



Verification Method(s) :

1. With reference to IEC 62321-2:2021, disassembly and disjointment were performed for the submitted samples.
2. With reference to IEC 62321-1:2013, tests were performed for the samples indicated by the photos in this report
  - (1) With reference to IEC 62321-3-1:2013, screening by EDXRF spectroscopy.
  - (2) Wet chemical test method: With reference to IEC 62321-4:2013+A1:2017, IEC62321-5:2013, IEC 62321-7-1:2015, IEC 62321-7-2:2017, ISO 17075-1:2017, IEC 62321-6:2015 and IEC62321-8:2017, analyzed by ICP-OES, UV-Vis and GC-MS.

Verification Part Description :

SN ID	Sample No	SGS Sample ID	Description
SN1	A1	CAN22-149919.001	Black plastic (cable jacket)
SN2	A2	CAN22-149919.002	Black plastic shell
SN3	A3	CAN22-149919.003	Black plastic shell
SN4	A4	CAN22-149919.004	Red plastic (wire insulation)
SN5	A5	CAN22-149919.005	White plastic (wire insulation)
SN6	A6	CAN22-149919.006	Green plastic (wire insulation)
SN7	A7	CAN22-149919.007	Black plastic (wire insulation)



SN ID	Sample No	SGS Sample ID	Description
SN8	A8	CAN22-149919.008	Golden metal pin
SN9	A9	CAN22-149919.009	White plastic part
SN10	A10	CAN22-149919.010	Black plastic part
SN11	A11	CAN22-149919.011	Silvery metal frame
SN12	A12	CAN22-149919.012	Black plastic part
SN13	A13	CAN22-149919.013	Blue "PCB"
SN14	A14	CAN22-149919.014	Silvery metal pin
SN15	A15	CAN22-149919.015	Silvery metal pin
SN16	A16	CAN22-149919.016	Silvery metal frame
SN17	A17	CAN22-149919.017	Black plastic part
SN18	A18	CAN22-149919.018	Silvery metal solder
SN19	A19	CAN22-149919.019	Black plastic shell
SN20	A20	CAN22-149919.020	Black rubber sheet
SN21	A21	CAN22-149919.021	Black surfaced metal screw
SN22	A22	CAN22-149919.022	Black plastic part
SN23	A23	CAN22-149919.023	Transparent plastic sheet
SN24	A24	CAN22-149919.024	Silvery metal sheet
SN25	A25	CAN22-149919.025	Green "PCB"
SN26	A26	CAN22-149919.026	Silvery metal solder
SN27	A27	CAN22-149919.027	Black plastic part
SN28	A28	CAN22-149919.028	Silvery metal frame
SN29	A29	CAN22-149919.029	Beige plastic housing
SN30	A30	CAN22-149919.030	Black plastic part
SN31	A31	CAN22-149919.031	Golden metal pin
SN32	A32	CAN22-149919.032	Silvery surfaced plastic part



Unless otherwise agreed in writing, this document is issued by the Company subject to its General Conditions of Service printed overleaf, available on request or accessible at <http://www.sgs.com/en/Terms-and-Conditions.aspx> and, for electronic format documents, subject to Terms and Conditions for Electronic Documents at <http://www.sgs.com/en/Terms-and-Conditions/Terms-e-Document.aspx>. Attention is drawn to the limitation of liability, indemnification and jurisdiction issues defined therein. Any holder of this document is advised that information contained hereon reflects the Company's findings at the time of its intervention only and within the limits of Client's instructions, if any. The Company's sole responsibility is to its Client and this document does not exonerate parties to a transaction from exercising all their rights and obligations under the transaction documents. This document cannot be reproduced except in full, without prior written approval of the Company. Any unauthorized alteration, forgery or falsification of the content or appearance of this document is unlawful and offenders may be prosecuted to the fullest extent of the law. Unless otherwise stated the results shown in this test report refer only to the sample(s) tested.

Attention: To check the authenticity of testing / inspection report & certificate, please contact us at telephone: (86-755) 8307 1443, or email: [CN\\_Doccheck@sgs.com](mailto:CN_Doccheck@sgs.com)

**Verification Results :**

In accordance with the result of material risk assessment, the following disjointed parts in the submitted sample have been verified. (Unless otherwise specified, the unit is mg/kg).

Test Item(s)	A1	A2	A3	A4	A5	A6	A7	A8
Pb	BL	BL	BL	BL	BL	BL	BL	BL
Cd	BL	BL	BL	BL	BL	BL	BL	BL
Hg	BL	BL	BL	BL	BL	BL	BL	BL
Cr(VI)▼	BL	BL	BL	BL	BL	BL	BL	BL
PBBs	BL	BL	BL	BL	BL	BL	BL	---
PBDEs	BL	BL	BL	BL	BL	BL	BL	---
DBP	ND	ND	ND	146	ND	109	231	---
BBP	ND	ND	ND	ND	ND	ND	ND	---
DEHP	ND	ND	468	ND	ND	ND	ND	---
DIBP	ND	ND	ND	ND	ND	ND	ND	---
<b>Conclusion</b>	<b>PASS</b>	<b>PASS</b>	<b>PASS</b>	<b>PASS</b>	<b>PASS</b>	<b>PASS</b>	<b>PASS</b>	<b>PASS</b>

Test Item(s)	A9	A10	A11	A12	A13	A14	A15	A16
Pb	BL	BL	BL	BL	BL	BL	BL	BL
Cd	BL	BL	BL	BL	BL	BL	BL	BL
Hg	BL	BL	BL	BL	BL	BL	BL	BL
Cr(VI)▼	BL	BL	BL	BL	BL	ND	BL	ND
PBBs	BL	BL	---	BL	ND	---	---	---
PBDEs	BL	BL	---	BL	ND	---	---	---
DBP	ND	ND	---	ND	ND	---	---	---
BBP	ND	ND	---	ND	ND	---	---	---
DEHP	ND	ND	---	ND	ND	---	---	---
DIBP	ND	ND	---	ND	ND	---	---	---
<b>Conclusion</b>	<b>PASS</b>	<b>PASS</b>	<b>PASS</b>	<b>PASS</b>	<b>PASS</b>	<b>PASS</b>	<b>PASS</b>	<b>PASS</b>

Test Item(s)	A17	A18	A19	A20	A21	A22	A23	A24
Pb	BL	BL	BL	BL	BL	BL	BL	BL
Cd	BL	BL	BL	BL	BL	BL	BL	BL
Hg	BL	BL	BL	BL	BL	BL	BL	BL
Cr(VI)▼	BL	BL	BL	BL	ND	BL	BL	BL
PBBs	BL	---	BL	BL	---	BL	BL	---





Test Item(s)	A17	A18	A19	A20	A21	A22	A23	A24
PBDEs	BL	---	BL	BL	---	BL	BL	---
DBP	ND	---	BL	ND	---	BL	BL	---
BBP	ND	---	BL	ND	---	BL	BL	---
DEHP	ND	---	BL	ND	---	BL	BL	---
DIBP	ND	---	BL	ND	---	BL	BL	---
<b>Conclusion</b>	<b>PASS</b>	<b>PASS</b>	<b>PASS</b>	<b>PASS</b>	<b>PASS</b>	<b>PASS</b>	<b>PASS</b>	<b>PASS</b>

Test Item(s)	A25	A26	A27	A28	A29	A30	A31	A32
Pb	BL	BL	BL	BL	BL	BL	BL	BL
Cd	BL	BL	BL	BL	BL	BL	BL	BL
Hg	BL	BL	BL	BL	BL	BL	BL	BL
Cr(VI)▼	BL	BL	BL	ND	BL	BL	BL	BL
PBBs	ND	---	BL	---	ND	BL	---	BL
PBDEs	ND	---	BL	---	ND	BL	---	BL
DBP	ND	---	ND	---	ND	ND	---	BL
BBP	ND	---	ND	---	ND	ND	---	BL
DEHP	ND	---	ND	---	ND	ND	---	BL
DIBP	ND	---	ND	---	ND	ND	---	BL
<b>Conclusion</b>	<b>PASS</b>	<b>PASS</b>	<b>PASS</b>	<b>PASS</b>	<b>PASS</b>	<b>PASS</b>	<b>PASS</b>	<b>PASS</b>



Unless otherwise agreed in writing, this document is issued by the Company subject to its General Conditions of Service printed overleaf, available on request or accessible at <http://www.sgs.com/en/Terms-and-Conditions.aspx> and, for electronic format documents, subject to Terms and Conditions for Electronic Documents at <http://www.sgs.com/en/Terms-and-Conditions/Terms-e-Documents.aspx>. Attention is drawn to the limitation of liability, indemnification and jurisdiction issues defined therein. Any holder of this document is advised that information contained hereon reflects the Company's findings at the time of its intervention only and within the limits of Client's instructions, if any. The Company's sole responsibility is to its Client and this document does not exonerate parties to a transaction from exercising all their rights and obligations under the transaction documents. This document cannot be reproduced except in full, without prior written approval of the Company. Any unauthorized alteration, forgery or falsification of the content or appearance of this document is unlawful and offenders may be prosecuted to the fullest extent of the law. Unless otherwise stated the results shown in this test report refer only to the sample(s) tested.

Attention: To check the authenticity of testing / inspection report & certificate, please contact us at telephone: (86-755) 8307 1443, or email: [CN.Doccheck@sgs.com](mailto:CN.Doccheck@sgs.com)

**Notes:**

(1) Interpretation of screening results by X-ray fluorescence spectrometry (XRF):

(a) Screening limits in mg/kg for regulated elements in various matrices according to IEC 62321-1:2013 Annex A as below table.

Element	Polymer	Metal	Composite Materials
Cd	$BL \leq (70-3\sigma) < X < (130+3\sigma) \leq OL$	$BL \leq (70-3\sigma) < X < (130+3\sigma) \leq OL$	$LOD < X < (150+3\sigma) \leq OL$
Pb	$BL \leq (700-3\sigma) < X < (1300+3\sigma) \leq OL$	$BL \leq (700-3\sigma) < X < (1300+3\sigma) \leq OL$	$BL \leq (500-3\sigma) < X < (1500+3\sigma) \leq OL$
Hg	$BL \leq (700-3\sigma) < X < (1300+3\sigma) \leq OL$	$BL \leq (700-3\sigma) < X < (1300+3\sigma) \leq OL$	$BL \leq (500-3\sigma) < X < (1500+3\sigma) \leq OL$
Br	$BL \leq (300-3\sigma) < X$	Not applicable	$BL \leq (250-3\sigma) < X$
Cr	$BL \leq (700-3\sigma) < X$	$BL \leq (700-3\sigma) < X$	$BL \leq (500-3\sigma) < X$

(b) If the maximum allowed level restricts PBB/PBDE and Cr(VI) rather than Br and Cr, the exceptions are the XRF determinations of Br and Cr. If the quantitative results for the elements Br and/or are higher than the limit (for Br calculated based on the stoichiometry of Br in the most common congeners of PBB/PBDE), the sample is “inconclusive”.

(c) Results are obtained by EDXRF for primary screening, LOD = Limit of Detection, BL = Below Limit, OL = C Limit, IN (The symbol X marks the region)= Inconclusive, where further investigation is necessary, and further chemical testing by ICP-OES (for Cd, Pb, Hg), UV-Vis (for Cr(VI)) and GC-MS (for PBBs/PBDE) are recommended to be performed.

(d) The EDXRF screening test for RoHS elements – The reading may be different to the actual content in the sample be of non-uniformity composition.

(2) Screening results of Phthalates (PHTH) are for primary screening, and further chemical testing by GC-MS (DBP, BBP, DEHP and DIBP) are recommended to be performed if the concentration exceeds the below warning value (unit: mg/kg).

Test Items	CAS No.	Polymer/ Composite Materials
Dibutyl Phthalate (DBP)	84-74-2	$BL \leq 600 < X$
Benzylbutyl Phthalate (BBP)	85-68-7	$BL \leq 600 < X$
Bis(2-ethylhexyl) Phthalate (DEHP)	117-81-7	$BL \leq 600 < X$
Diisobutyl Phthalate (DIBP)	84-69-5	$BL \leq 600 < X$

(3) Interpretation of results by chemical tests:

(a) mg/kg = 0.0001%, MDL=Method detection Limit, ND = Not Detected (<MDL), --- = Not Applicable.



Unless otherwise agreed in writing, this document is issued by the Company subject to its General Conditions of Service printed overleaf, available on request or accessible at <http://www.sgs.com/en/Terms-and-Conditions.aspx> and, for electronic format documents, subject to Terms and Conditions for Electronic Documents at <http://www.sgs.com/en/Terms-and-Conditions/Terms-e-Documents.aspx>. Attention is drawn to the limitation of liability, indemnification and jurisdiction issues defined therein. Any holder of this document is advised that information contained hereon reflects the Company's findings at the time of its intervention only and within the limits of Client's instructions, if any. The Company's sole responsibility is to its Client and this document does not exonerate parties to a transaction from exercising all their rights and obligations under the transaction documents. This document cannot be reproduced except in full, without prior written approval of the Company. Any unauthorized alteration, forgery or falsification of the content or appearance of this document is unlawful and offenders may be prosecuted to the fullest extent of the law. Unless otherwise stated the results shown in this test report refer only to the sample(s) tested.

(b) Unit and MDL in wet chemical test

Test Items	Pb	Cd	Hg	DBP	BBP	DEHP	DIBP
Unit	mg/kg	mg/kg	mg/kg	mg/kg	mg/kg	mg/kg	mg/kg
MDL	10	10	10	100	100	100	100

The MDL for single compound of PBBs and PBDEs is 100 mg/kg.

MDL of Cr(VI) for polymer, composite and leather sample is 10 mg/kg.

MDL of Cr(VI) for metal sample is 0.10µg/cm<sup>2</sup>.

(c) ▽ =Metal sample

a. The sample is positive for Cr(VI) if the Cr(VI) concentration is greater than 0.13µg/cm<sup>2</sup>.

The sample coating is considered to contain Cr(VI)

b. The sample is negative for Cr(VI) if Cr(VI) is ND (concentration less than 0.10µg/cm<sup>2</sup>).

The coating is considered a non-Cr(VI) based coating

c. The result between 0.10µg/cm<sup>2</sup> and 0.13µg/cm<sup>2</sup> is considered to be inconclusive

- unavoidable coating variations may influence the determination

Information on storage conditions and production date of the tested sample is unavailable and thus Cr(VI) results represent status of the sample at the time of testing.

(4) Restricted substances and maximum concentration values tolerated by weight in homogeneous materials under RoHS Directive: Cd: 0.01%, Pb/Hg/Cr(VI)/PBBs/PBDEs/DEHP/DBP/BBP/DIBP: 0.1%. The limit is quoted from RoHS Directive (EU) 2015/863.

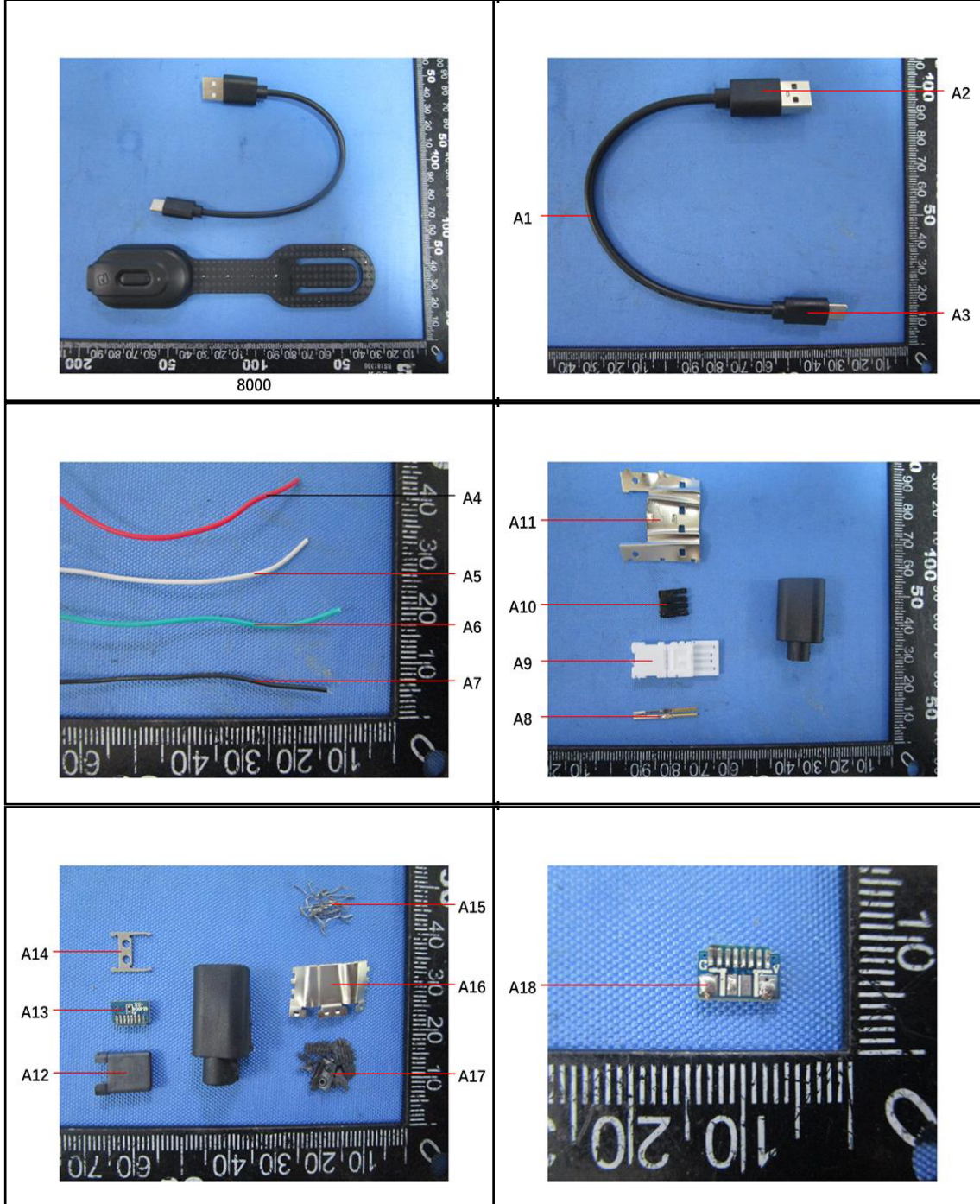
(5) IEC 62321 series is equivalent to EN 62321 series.

Unless otherwise stated, the decision rule for conformity reporting is based on Binary Statement for Simple Acceptance Rule (w=0) stated in ILAC-G8:09/2019.

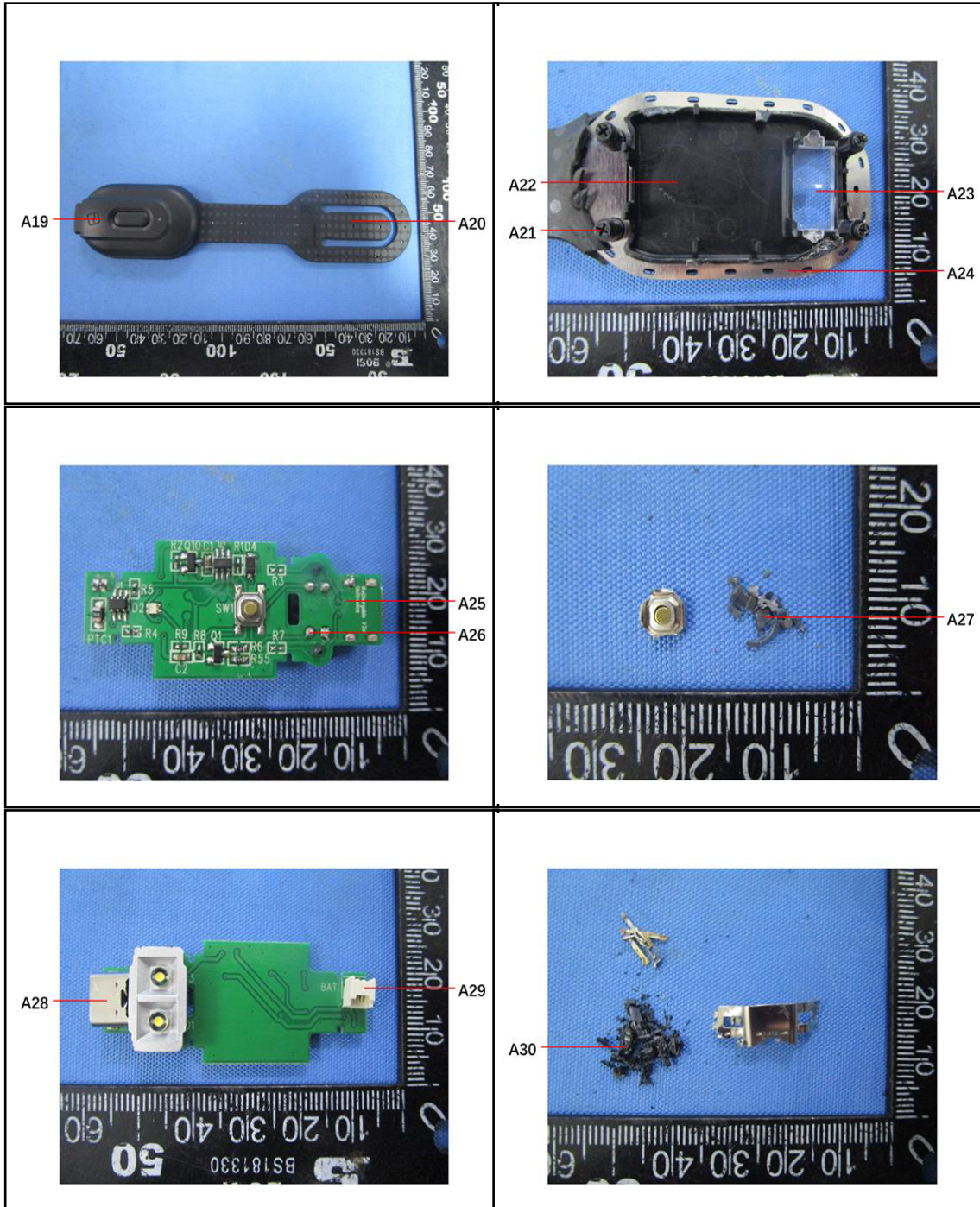


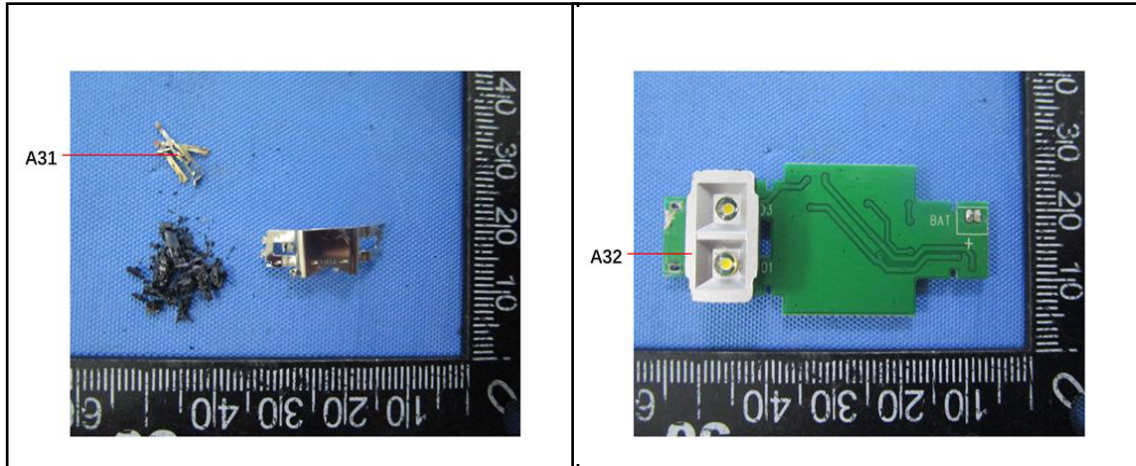


Sample photo:









SGS authenticate the photo on original report only

\*\*\* End of Report \*\*\*

