



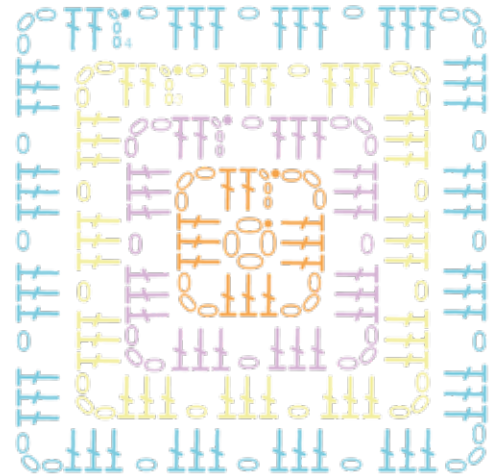
## 1. BASIC

### NOTE

To increase the size, repeat round 4 until the desired size is reached, changing color every round.

### JOINING

Use either the slip stitch method (page 14) or join as you go (page 15).



See pages 4-5 for a symbol key.

uncorrected publicity proof

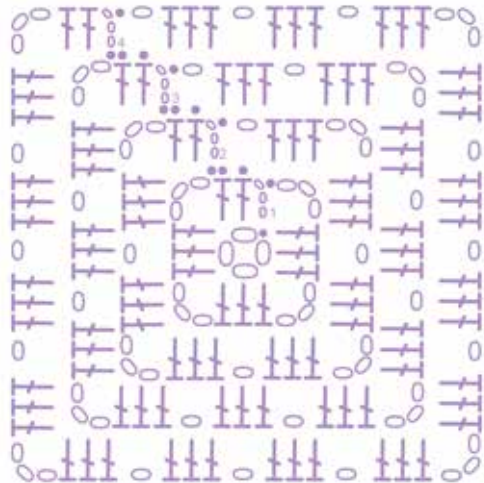
## 2. SINGLE COLOR

### NOTE

To increase the size, repeat round 4 until the desired size is reached.

### JOINING

Use either the slip stitch method (page 14) or join as you go (page 15).



See pages 4-5 for a symbol key.



uncorrected publicity proof

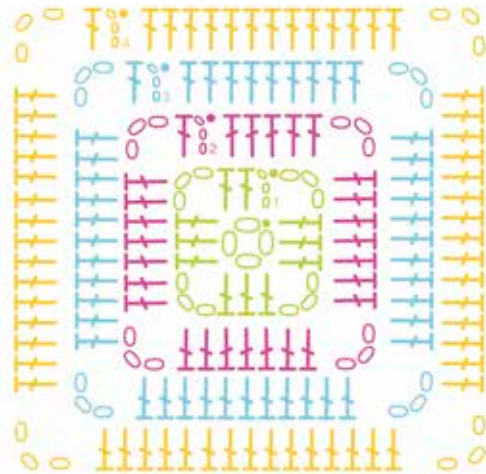
### 3. SOLID STRIPED

#### NOTE

To increase the size, repeat round 3 until the desired size is reached, changing color every round.

#### JOINING

Use the slip stitch method (page 14).



See pages 4-5 for a symbol key.







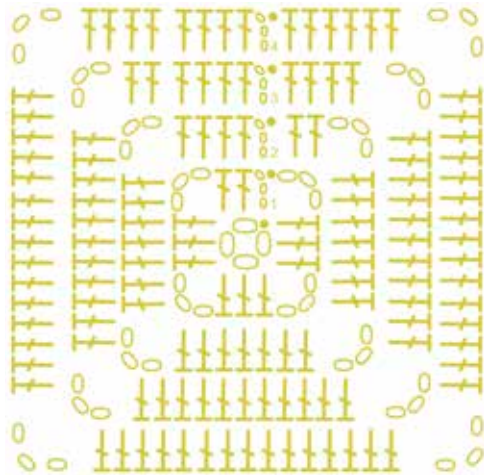
## 4. SOLID

### NOTE

To increase the size, repeat round 3 until the desired size is reached.

### JOINING

Use the slip stitch method (page 14).



See pages 4-5 for a symbol key.

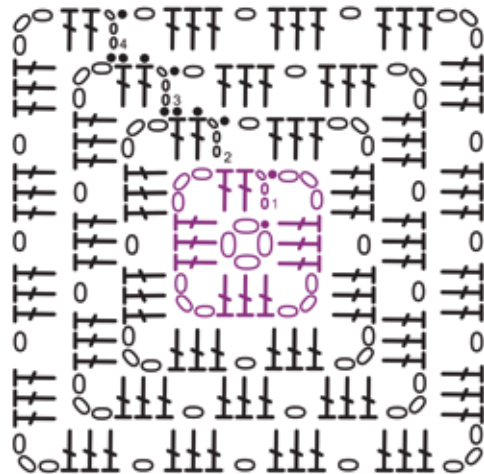
## 5. TWO-COLOR

### NOTE

To increase the size, repeat round 4 until the desired size is reached.

### JOINING

Use either the slip stitch method (page 14) or join as you go (page 15).



See pages 4–5 for a symbol key.

uncorrected publicity proof

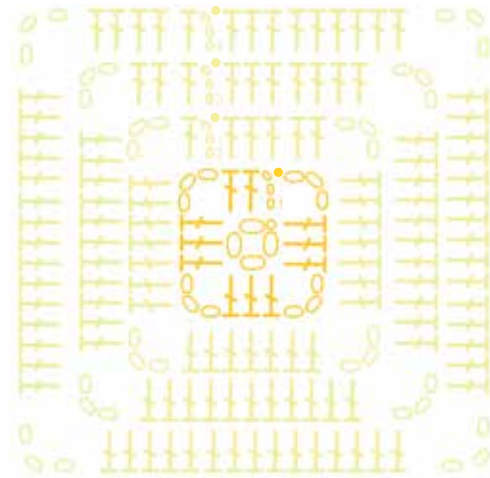
## 6. SOLID TWO-COLOR

### NOTE

To increase the size, repeat round 3 until the desired size is reached.

### JOINING

Use the slip stitch method (page 14).



See pages 4–5 for a symbol key.



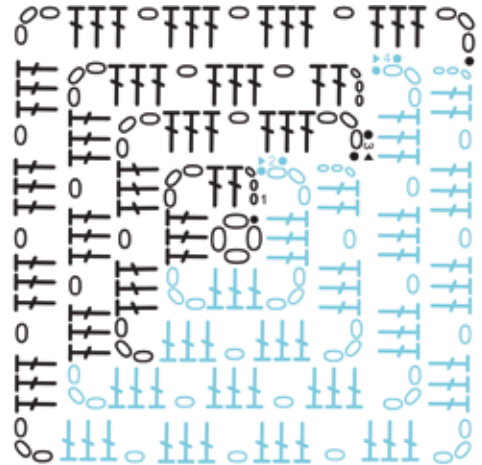
## 7. HALF AND HALF

### NOTE

This square is worked in joined rows – complete one row, join to the beginning of the row, then turn work and work back the other way. When changing color, leave all unused yarn where it is, to pick up later.

### JOINING

Use either the slip stitch method (page 14) or join as you go (page 15).



See pages 4–5 for a symbol key.





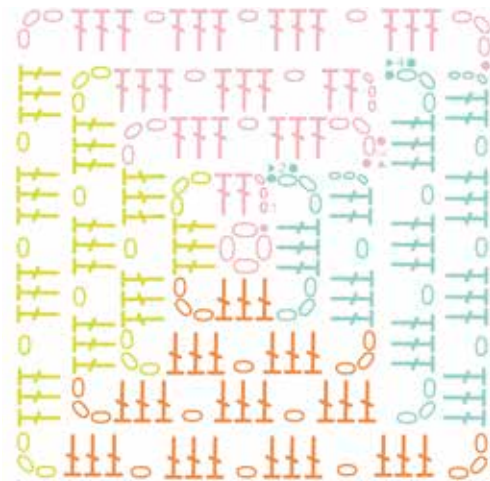
## 8. QUARTERED

### NOTE

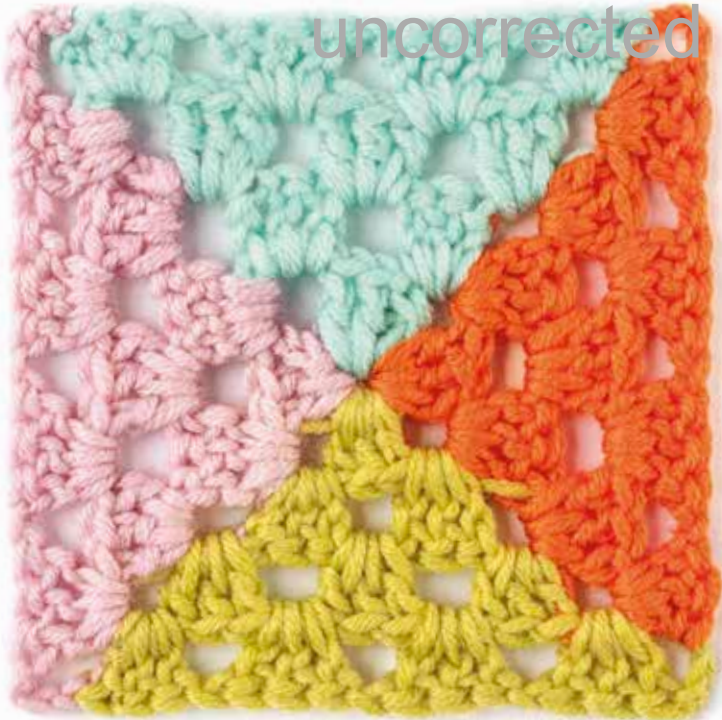
This square is worked in joined rows – complete one row, join to the beginning of the row, then turn work and work back the other way. When changing color, leave all unused yarn where it is, to pick up later.

### JOINING

Use either the slip stitch method (page 14) or join as you go (page 15).



See pages 4–5 for a symbol key.





uncorrected publicity proof

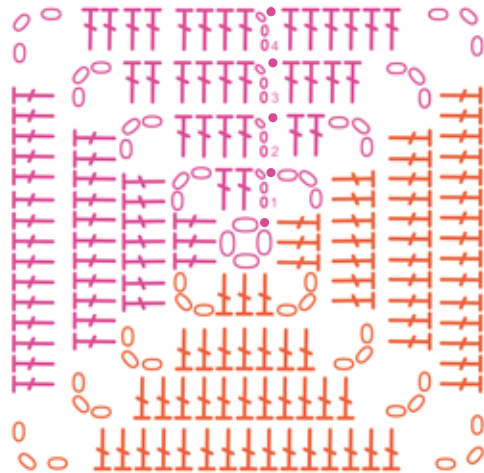
## 9. HALF AND HALF SOLID

### NOTE

When changing yarn, bring unused color with you, trapping ends inside the stitches as you go so the unused yarn is ready when you need it.

### JOINING

Use the slip stitch method (page 14).



See pages 4–5 for a symbol key.

uncorrected publicity proof

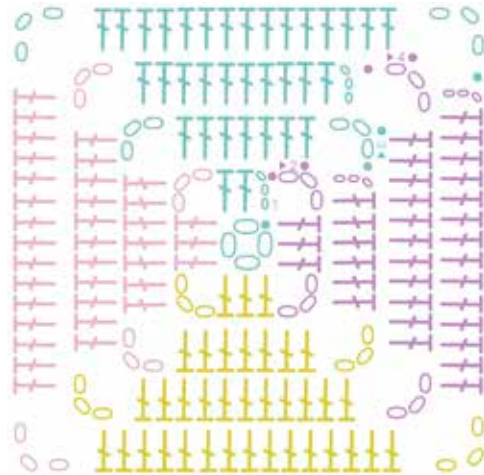
## 10. QUARTERED SOLID

### NOTE

This square is worked in joined rows – complete one row, join to the beginning of the row, then turn work and work back the other way. When changing color, leave all unused yarn where it is, to pick up later.

### JOINING

Use the slip stitch method (page 14).



See pages 4–5 for a symbol key.

uncorrected publicity proof

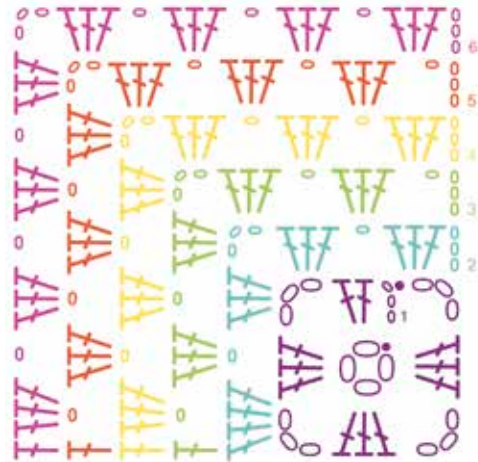
## 11. MITERED

### NOTE

Row 1 is joined into a round, but after that the piece is not worked in rounds but in unturned rows, with each new color added at the beginning of the last unturned row.

### JOINING

Use the slip stitch method (page 14).



See pages 4-5 for a symbol key.



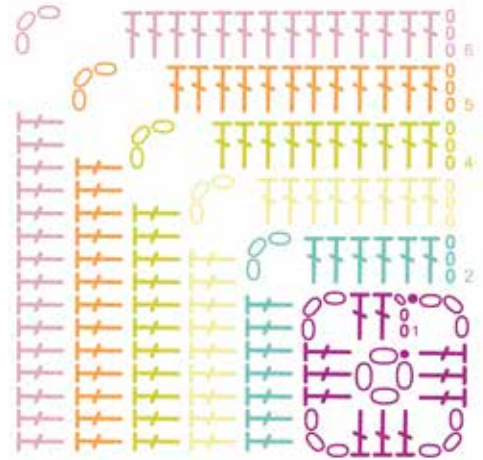
## 12. MITERED SOLID

### NOTE

Row 1 is joined into a round, but after that the piece is not worked in rounds but in unturned rows, with each new color added at the beginning of the last unturned row.

### JOINING

Use the slip stitch method (page 14).



See pages 4–5 for a symbol key.

### 13. STRIPE

#### NOTE

This square is worked in unturned rows, with each new color added at the beginning of the last unturned row. The final row is an edging working in the round.

#### JOINING

Use the slip stitch method (page 14).



See pages 4-5 for a symbol key.

## 14. DIAGONAL STRIPE

### NOTE

This square is worked in unturned rows, on the diagonal, with each new color added at the beginning of the last unturned row. The final row is an edging working in the round.

### JOINING

Use the slip stitch method (page 14).



See pages 4–5 for a symbol key.



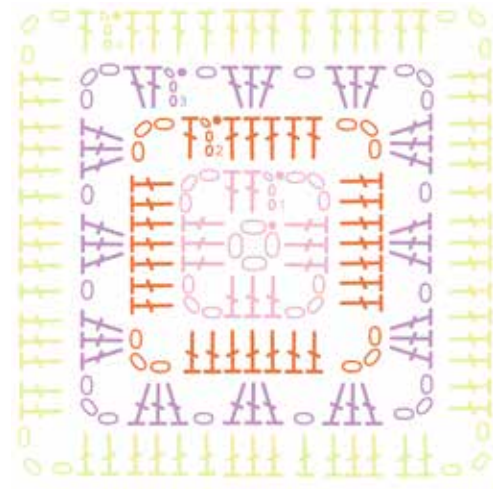


uncorrected publicity proof

## 15. MIXED

### JOINING

Use the slip stitch method (page 14).



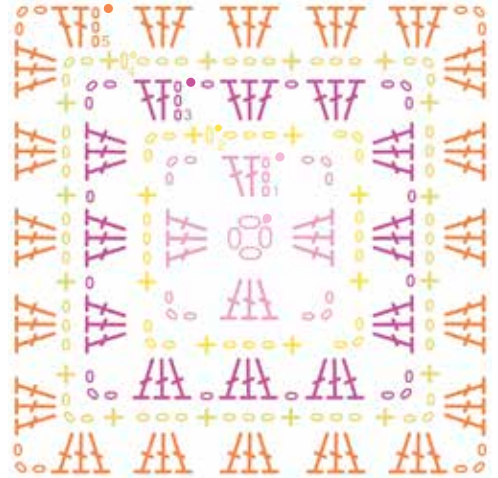
See pages 4–5 for a symbol key.

uncorrected publicity proof

## 16. BLOCK STITCH

### JOINING

Use the slip stitch method (page 14).



See pages 4-5 for a symbol key.



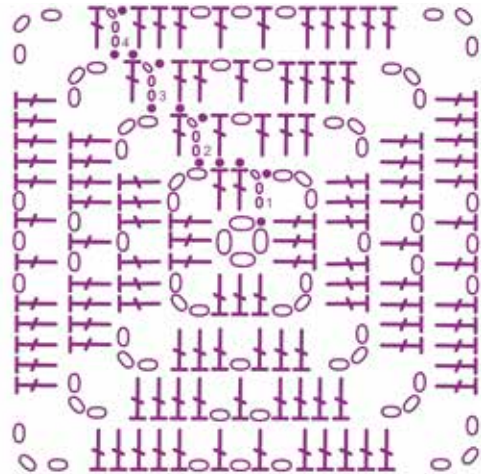
uncorrected publicity proof



## 17. LACE HOLES

### JOINING

Use the slip stitch method (page 14).



See pages 4-5 for a symbol key.



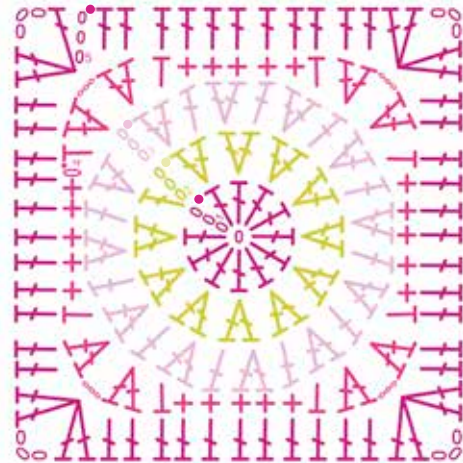
uncorrected publicity proof



## 18. CIRCLE TO SQUARE

### JOINING

Use the slip stitch method (page 14).



See pages 4-5 for a symbol key.

uncorrected publicity proof

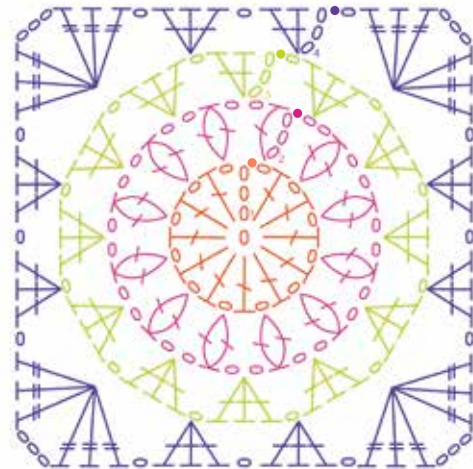
## 19. GRANNY CIRCLE TO SQUARE

### SPECIAL STITCH

2 dc cluster (cl2)  
(see page 12).

### JOINING

Use either the  
slip stitch method  
(page 14) or join as  
you go (page 15).



See pages 4-5 for a symbol key.



uncorrected publicity proof

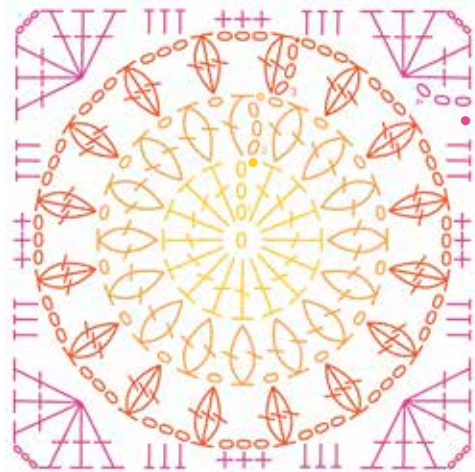
## 20. STARBURST

### SPECIAL STITCHES

2 dc cluster (cl2)  
and and 3 dc  
cluster (cl3) (see  
page 12).

### JOINING

Use the slip stitch  
method (page 14).



See pages 4-5 for a symbol key.



uncorrected publicity proof

## 21. PUFF CIRCLE TO SQUARE

### SPECIAL STITCH

Puff stitch (see  
page 12).

### JOINING

Use either the  
slip stitch method  
(page 14) or join as  
you go (page 15).



See pages 4–5 for a symbol key.





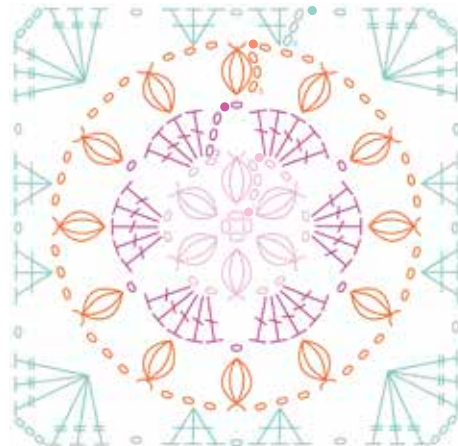
## 22. STAR PUFF

### SPECIAL STITCH

Puff stitch (see page 12).

### JOINING

Use either the slip stitch method (page 14) or join as you go (page 15).



See pages 4–5 for a symbol key.



## 23. POPCORN CORNERS

### **SPECIAL STITCH**

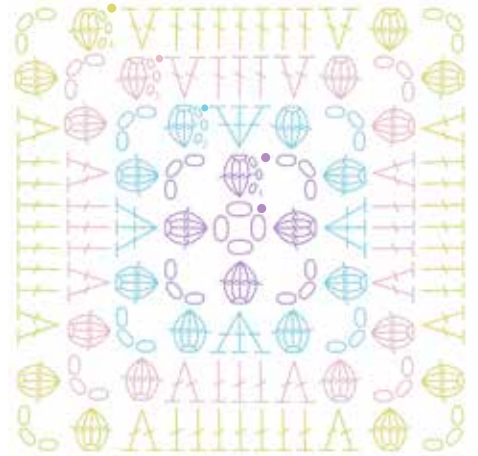
Popcorn stitch  
(pop) (see page 12).

### **JOINING**

Use the slip stitch  
method (page 14).

### **NOTE**

The first pop in  
each round will be  
worked over the first  
3 ch and 4 more dc.



*See pages 4–5 for a symbol key.*



uncorrected publicity proof

## 24. POPCORN CENTER

### SPECIAL STITCH

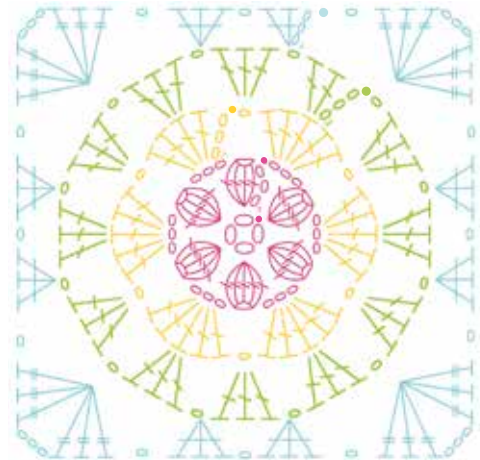
Popcorn stitch (pop) (see page 12).

### JOINING

Use either the slip stitch method (page 14) or join as you go (page 15).

### NOTE

The first pop in each round will be worked over the first 3 ch and 4 more dc.



See pages 4–5 for a symbol key.



uncorrected publicity proof

## 25. POPCORN DAISY

### SPECIAL STITCH

Popcorn stitch  
(pop) (see page 12).

### JOINING

Use either the  
slip stitch method  
(page 14) or join as  
you go (page 15).

### NOTE

The first pop in  
each round will be  
worked over the first  
3 ch and 4 more dc.



See pages 4-5 for a symbol key.

## 26. POPCORN FLOWER

### SPECIAL STITCHES

Popcorn stitch (pop), puff stitch, 2 dc cluster (cl2) (see page 12).

### JOINING

Use either the slip stitch method (page 14) or join as you go (page 15).

### NOTE

The first pop in each round will be worked over the first 3 ch and 4 more dc.



See pages 4–5 for a symbol key.



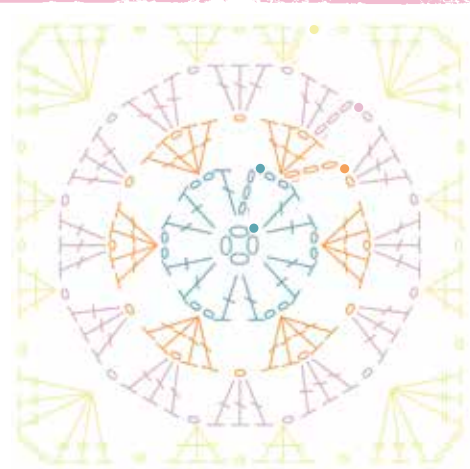


uncorrected publicity proof

## 27. GRANNY STAR CIRCLE

### JOINING

Use either the slip stitch method (page 14) or join as you go (page 15).



See pages 4–5 for a symbol key.



uncorrected publicity proof

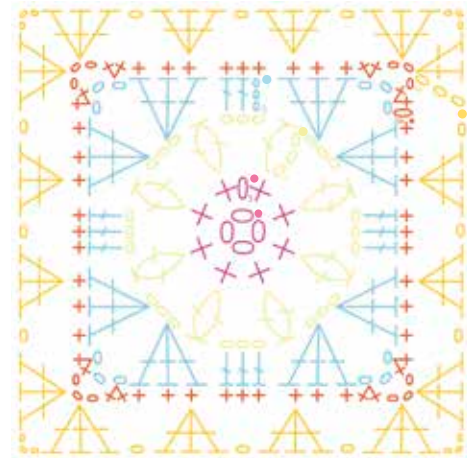
## 28. DAISY

### SPECIAL STITCHES

2 dc cluster (cl2)  
(see page 12).

### JOINING

Use either the  
slip stitch method  
(page 14) or join as  
you go (page 15).



See pages 4-5 for a symbol key.

uncorrected publicity proof

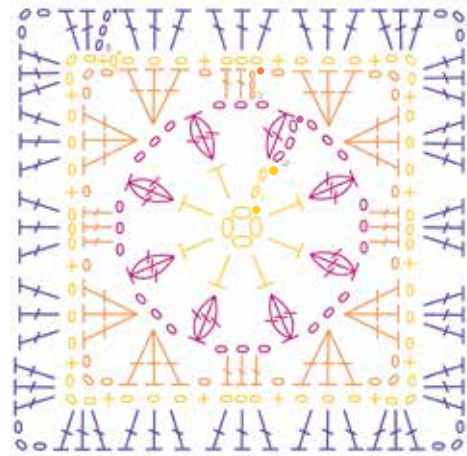
## 29. CLUSTER FLOWER

### SPECIAL STITCHES

2 dc cluster (cl2),  
3 dc cluster (cl3)  
(see page 12).

### JOINING

Use the slip stitch  
method (page 14).



See pages 4–5 for a symbol key.





uncorrected publicity proof

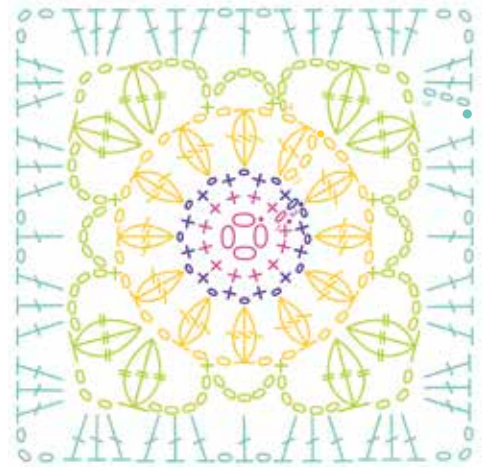
## 30. SUNFLOWER

### SPECIAL STITCHES

2 dc cluster (cl2),  
3 dc cluster (cl3),  
3 tr cluster (trcl3)  
(see pages 12–13).

### JOINING

Use the slip stitch  
method (page 14).



See pages 4–5 for a symbol key.

uncorrected publicity proof

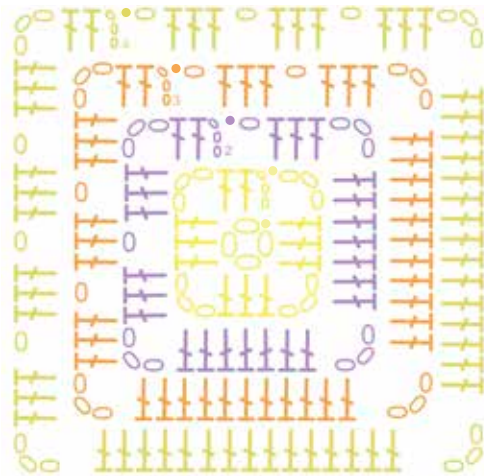
## 31. IN A MUDDLE

### NOTE

To increase the size of this square, repeat round 4 until the desired size is reached, changing color every round.

### JOINING

Use the slip stitch method (page 14).



See pages 4-5 for a symbol key.



## 32. LITTLE LINES

### SPECIAL STITCH

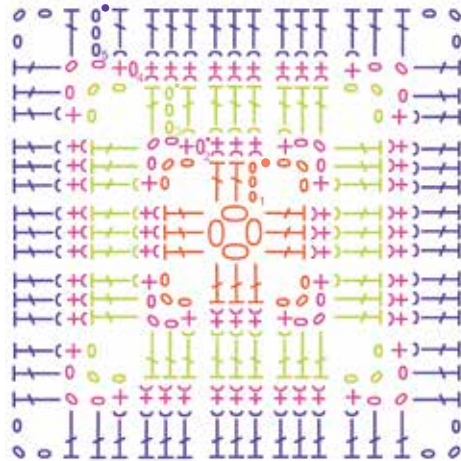
Back loop only (blo)  
(see page 13).

### NOTE

To increase the size of this square, alternate the last two rounds until the desired size has been reached, changing color every round.

### JOINING

Use the slip stitch method (page 14).



See pages 4–5 for a symbol key.



uncorrected publicity proof

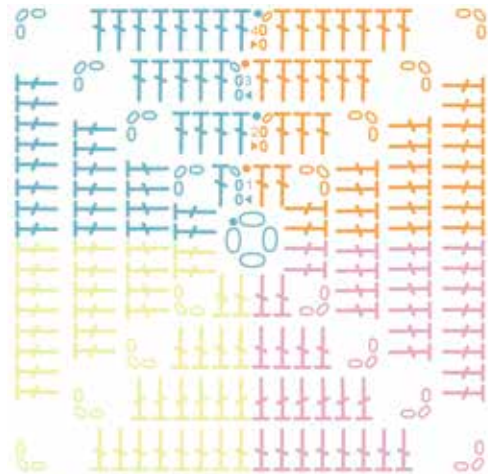
### 33. MINI SQUARES

#### NOTE

This square is worked in joined rows – complete one row, join to the beginning of the row, then turn work and work back the other way. When changing color, leave all unused yarn where it is, to pick up later.

#### JOINING

Use the slip stitch method (page 14).



See pages 4–5 for a symbol key.



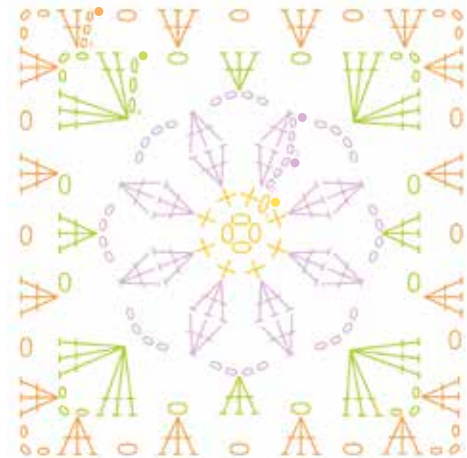
## 34. SUN

### SPECIAL STITCHES

Dc 2 sts together (dc2tog), dc 3 sts together (dc3tog) (see page 13).

### JOINING

Use either the slip stitch method (page 14) or join as you go (page 15).



See pages 4–5 for a symbol key.

uncorrected publicity proof

## 35. PETALS & LEAVES

### SPECIAL STITCHES

Popcorn stitch (pop), tr cluster (trcl) (see pages 12–13).

### JOINING

Use the slip stitch method (page 14).

### NOTE

The first pop in each round will be worked over the first 3 ch and 4 more dc.



See pages 4–5 for a symbol key.







## 36. DAHLIA

### SPECIAL STITCH

Popcorn stitch (pop) (see page 12).

### JOINING

Use the slip stitch method (page 14).

### NOTE

The first pop in each round will be worked over the first 3 ch and 4 more dc.



See pages 4–5 for a symbol key.

uncorrected publicity proof

## 37. FLOWER POWER

### SPECIAL STITCH

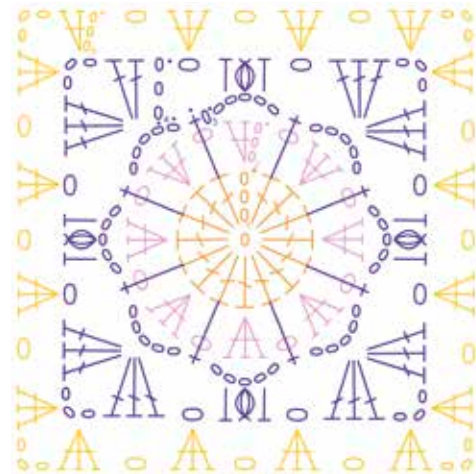
Puff stitch (puff)  
(see page 12).

### NOTE

Stitches made in round 3 are worked into unworked stitches from round 1, as shown by the long single crochet symbols.

### JOINING

Use either the slip stitch method (page 14) or join as you go (page 15).



See pages 4–5 for a symbol key.

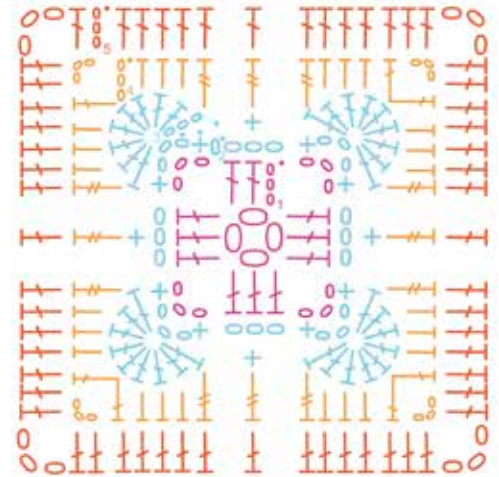
uncorrected publicity proof



## 38. SCALLOP CENTER

### JOINING

Use the slip stitch method (page 14).



See pages 4-5 for a symbol key.

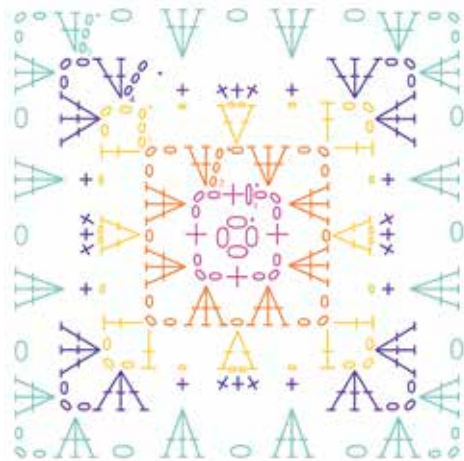


uncorrected publicity proof

## 39. PETALS & LACE

### JOINING

Use either the slip stitch method (page 14) or join as you go (page 15).



See pages 4–5 for a symbol key.

uncorrected publicity proof



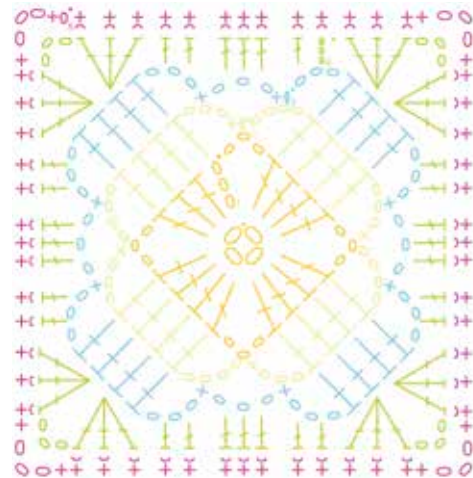
## 40. DIAMOND

### SPECIAL STITCH

Back loop only (blo)  
(see page 13).

### JOINING

Use the slip stitch  
method (page 14).



See pages 4-5 for a symbol key.

uncorrected publicity proof

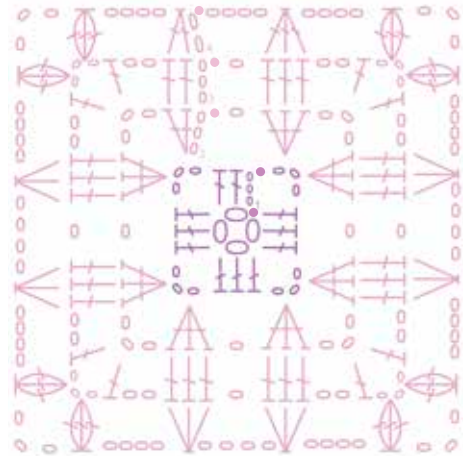
## 41. LEAVES

### SPECIAL STITCH

Dc two together (dc2tog), dc three together (dc3tog), 3 dc cluster (cl3) (see pages 12–13).

### JOINING

Use the slip stitch method (page 14).



See pages 4–5 for a symbol key.





uncorrected publicity proof

## 42. AFRICAN FLOWER

### SPECIAL STITCH

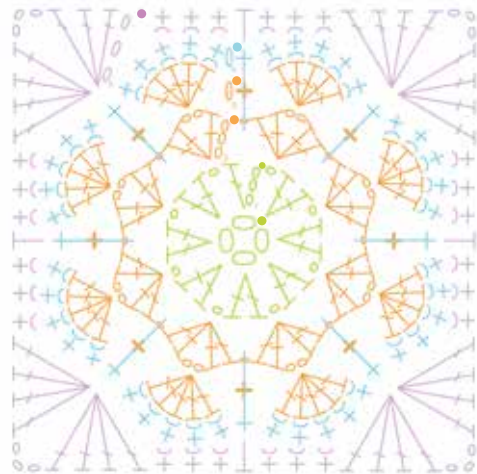
Back loop only (blo)  
(see page 13).

### NOTE

Long single crochet stitches in round 4 are worked down into unworked chain spaces from round 2, working over the single crochet from round 3.

### JOINING

Use the slip stitch method (page 14).



See pages 4–5 for a symbol key.



uncorrected publicity proof

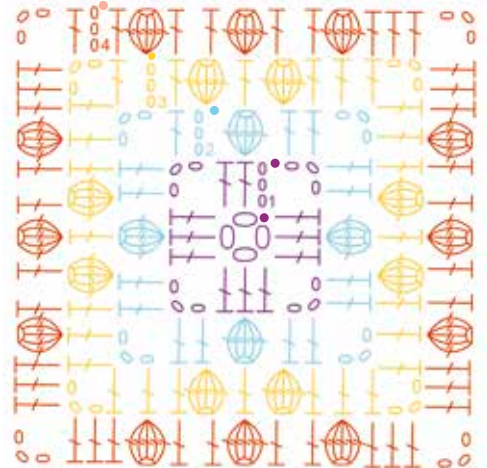
## 43. POPCORN

### SPECIAL STITCH

Popcorn (pop)  
(see page 12).

### JOINING

Use the slip stitch  
method (page 14).



See pages 4–5 for a symbol key.

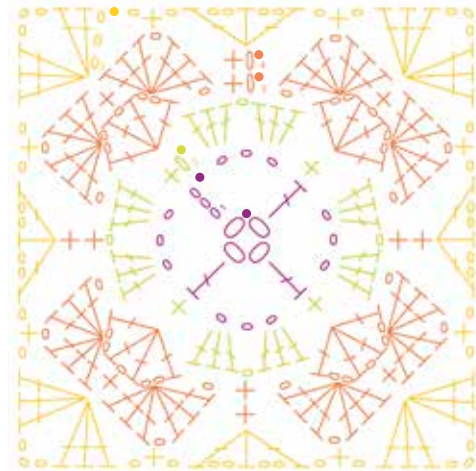


uncorrected publicity proof

## 44. DIAMOND SCALLOPS

### JOINING

Use the slip stitch method (page 14).



See pages 4–5 for a symbol key.





uncorrected publicity proof

## 45. POPPY

### SPECIAL STITCH

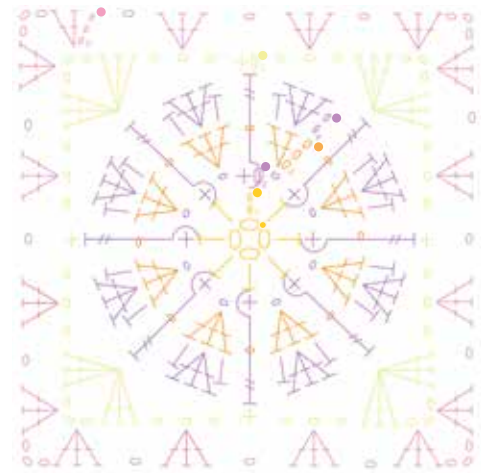
Raised treble front (RtrF) (see page 13).

### NOTE

RtrF made in round 4 are worked around unworked single crochet from round 2, as shown by the long RtrF symbols.

### JOINING

Use either the slip stitch method (page 14) or join as you go (page 15).



See pages 4–5 for a symbol key.

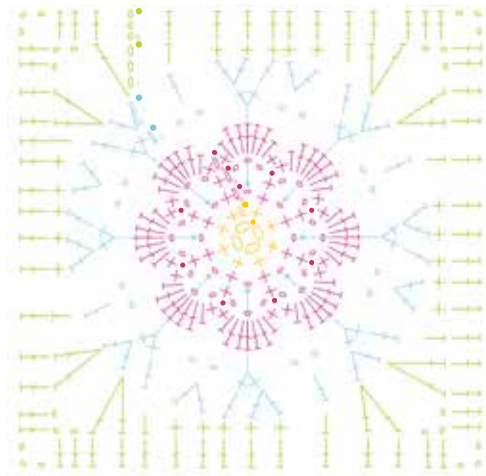
## 46. 3D FLOWER

### NOTE

Round 5 is worked behind the petals made on rounds 3 and 4 – the stitches are made into unworked spaces of round 2, as denoted by the arrows.

### JOINING

Use the slip stitch method (page 14).



See pages 4–5 for a symbol key.



uncorrected publicity proof



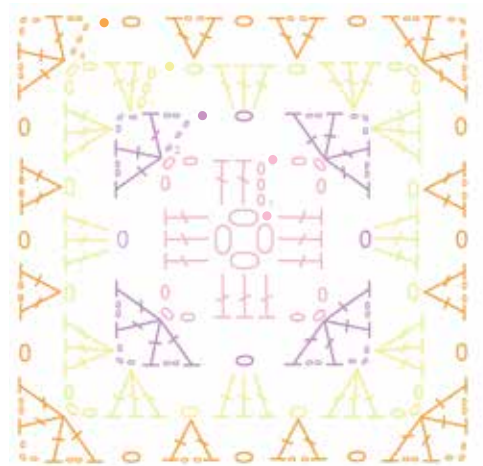
## 47. V-STITCH

### SPECIAL STITCH

V stitch (V st)  
(see page 12).

### JOINING

Use either the  
slip stitch method  
(page 14) or join as  
you go (page 15).



See pages 4–5 for a symbol key.

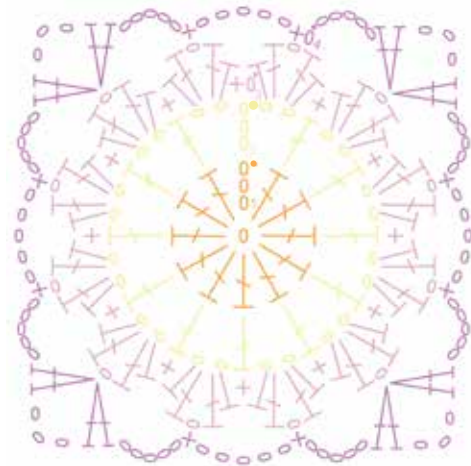


uncorrected publicity proof

## 48. WHEEL SPOKE

### JOINING

Use the slip stitch method (page 14).



See pages 4–5 for a symbol key.

## 49. FLORAL CROWN

### SPECIAL STITCHES

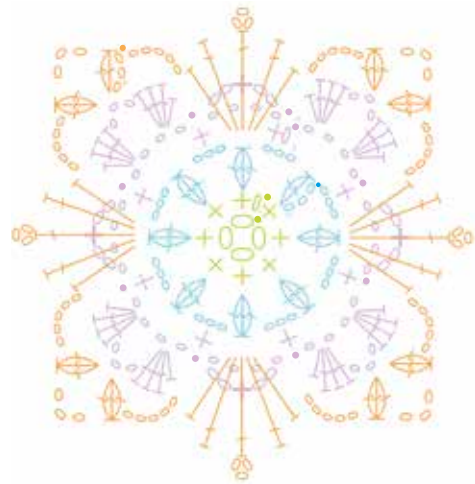
2dc cluster (cl2),  
3dc cluster (cl3),  
picot (see page 12).

### NOTE

Some stitches in round 5 are worked into unworked chain spaces from round 3, as shown by the long hdc and dc symbols.

### JOINING

Slip stitch (page 14) or, if joining to other floral crowns, join as you go (page 15) on the last round, joining with a slip stitch at the center of every chain space and picot.



See pages 4–5 for a symbol key.



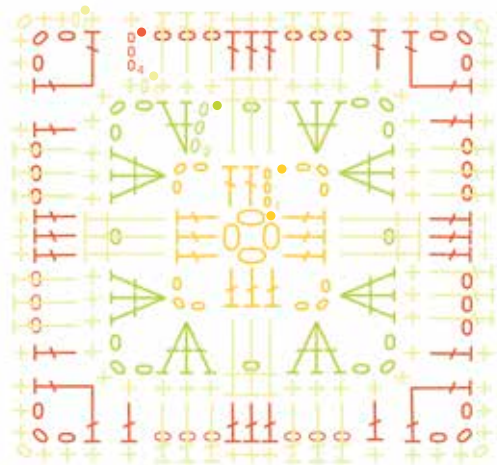
## 50. CHECKERBOARD

### JOINING

Use the slip stitch method (page 14).

### NOTE

Some stitches made in rounds 3 and 5 are worked into unworked stitches from two rounds below, as shown by long dc symbols. Work over the chains from the round below when hooking these.



See pages 4-5 for a symbol key.

